

HEDRON DERRICK BARGE

TRITON OFFSHORE



**TRITON
OFFSHORE**

Achievement Through Teamwork



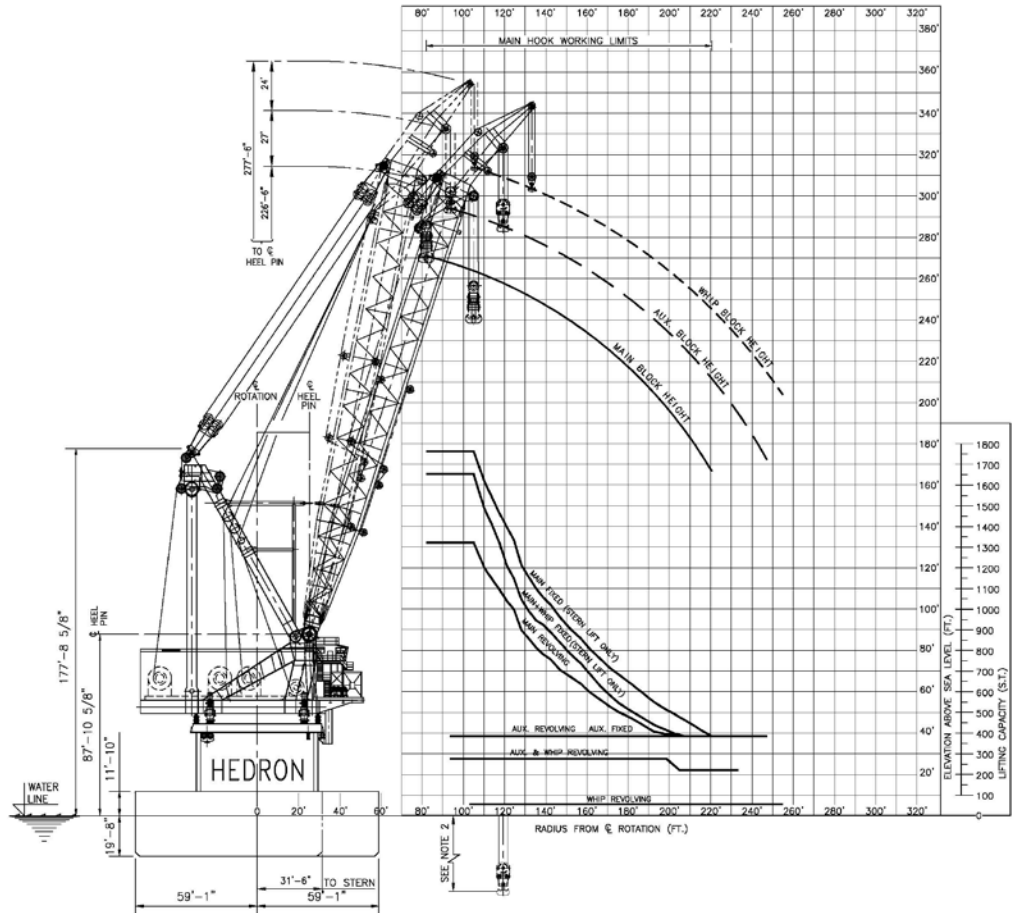
VESSEL SPECIFICATIONS

The DB Hedron is a world-class derrick barge with a 1,763-ton (1,600-metric) capacity, fully revolving crane, and accommodations for 300 personnel. The DB Hedron and its experienced crew offers valuable solutions for heavy lift, decommissioning, construction, and installation projects.

DIMENSIONS

Length (LOA)	394 feet (120 meters)
Width	118 feet (36 meters)
Depth	31.5 feet (9.6 meters)
Operating Draft	19.7 feet (6 meters)
Working Deck Area	14,322 square feet (4,340 square meters)
Classifications	ABS A-1, CRC, Accomodation/ Work, UWILD Solas
Registry (Flag)	Vanuatu
Helideck	
Dimensions	83 x 77 feet (25 x 23 meters) capable of receiving a Sikorsky 61N
Load Capacity	28,660 pounds

Hook Radius vs. Lifting Capacity and Hook Height



ACCOMMODATIONS & STORAGE CAPACITY

Living Space	300-person quarters
Fuel Capacity	534,000 gallons (2,022 m ³)
Fresh Water Capacity	414,000 gallons (1,568 m ³)

COMMUNICATIONS

- Comsat/Inmarsat Satellite Communications: Thrane & Thane/Sailor 77 Fleet, 40 watts, 1626.5 - 1660.5 MHZ
- VHF: (2) Furuno/FM8800S VHF-FM, 25/1 watts, 155.000 - 161.475 MHZ
- Global Maritime Distress and Safety System



**TRITON
OFFSHORE**

Achievement Through Teamwork

HEDRON DERRICK BARGE

TRITON OFFSHORE

MAIN CRANE

Make	Wison
Model	1600
Type	Revolving
Boom Length	
Main	236 feet, max hook height above main deck (72 meters)
Auxiliary	279 feet, max hook height above main deck (85 meters), 600 feet below water line
Whip	292 feet, max hook height above main deck (89 meters)
Capacity	
Main Fixed	1,763 short tons @ 105-foot radius (1,600 MT @ 32 meters radius)
Main Revolving	1,323 short tons @ 105-foot radius (1,200 MT @ 32 meters radius)
Auxiliary	385 short tons @ 246-foot radius (350 MT @ 75 meters radius) and to EL (-) 600 feet
Whip	55 short tons @ 256-foot radius (50 MT @ 78 meters radius)

DECK EQUIPMENT

Deck Crane

Make	Manitowoc
Model	14000
Type	Crawler

Boom

Length	143 foot main
Capacity	112 short tons

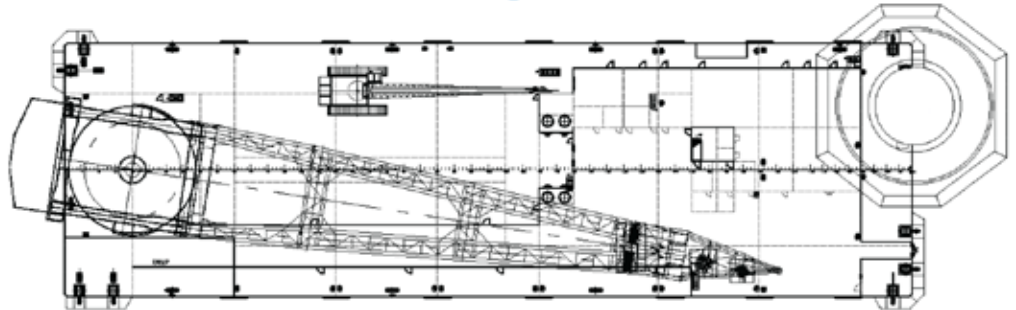
Compressors

Diesel	(1) 750 CFM
--------	-------------

Jet Pumps

Diesel	(1) 6x6
--------	---------

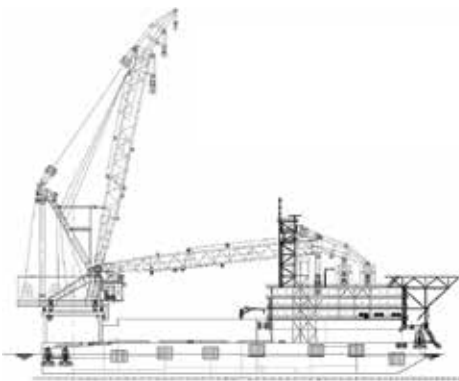
Derrick Barge Main Deck



MOORING EQUIPMENT

Anchors	(10)
Capacity	13 tons (12,000 kg)
Type	Flipper style
Winches	
Quantity	(10)
Type	SKW P1009-HMW
Capacity	143 tons (130 metric tons)
Wire	
Diameter	2.25 inch
Length	6,600 feet (2,000 meters)

Derrick Barge Elevation



AUXILIARY EQUIPMENT

Main Generator	(8) 1,000 kW, 690 volt, 50 Hz, 3 phase
Emergency Generator	(1) 500 kW, 690 volt, 50 Hz, 3 phase
Electric Compressors	(2) 1,000 m3 @ 10 bar